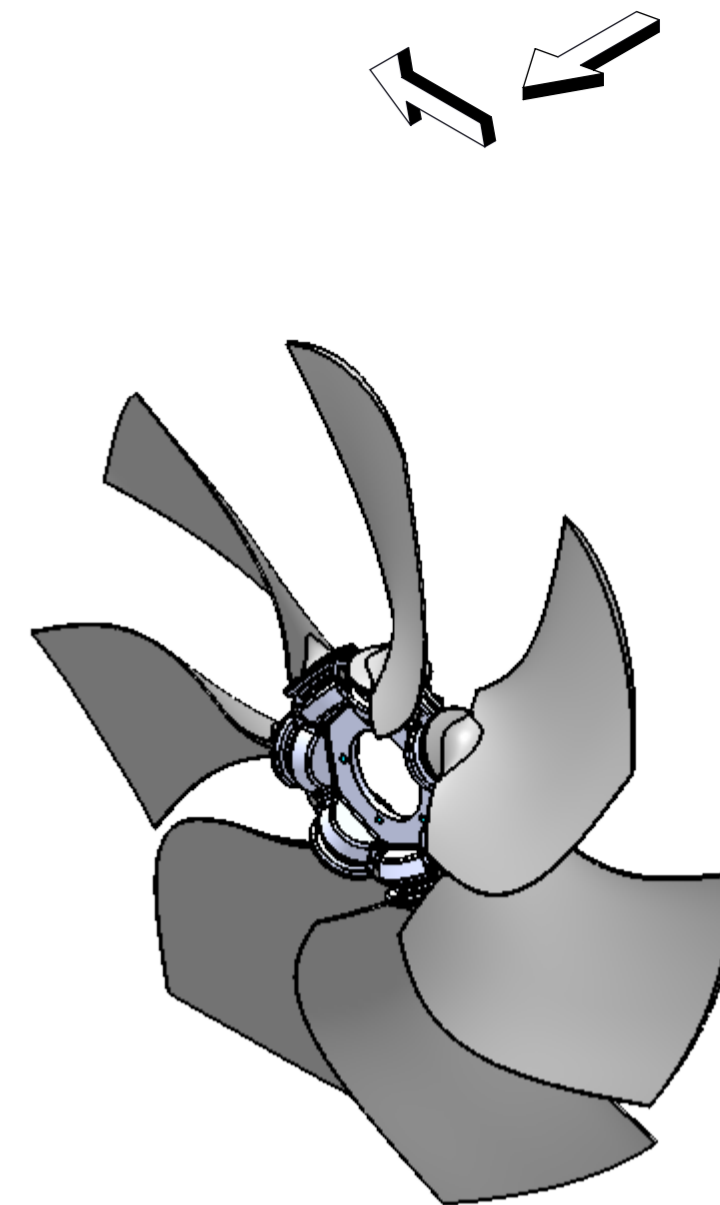
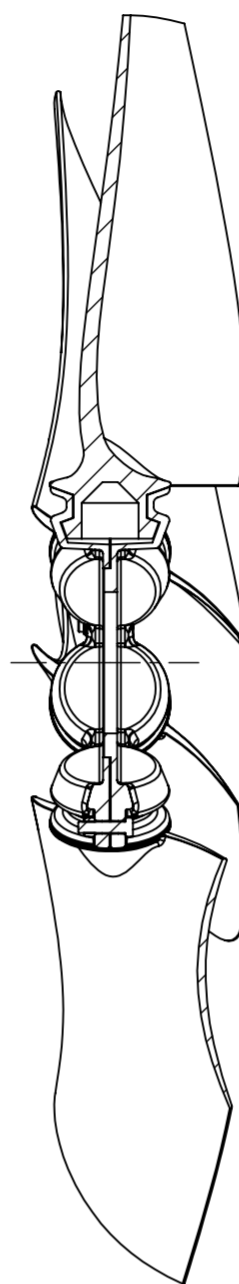
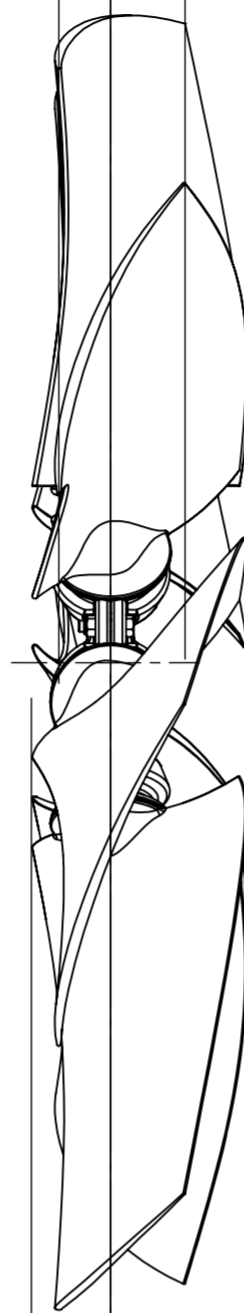


Leading Tip 27.4 ±8

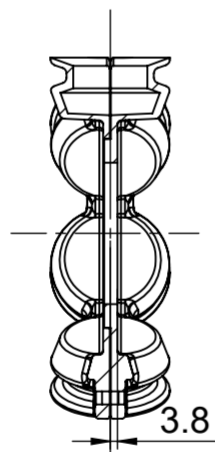
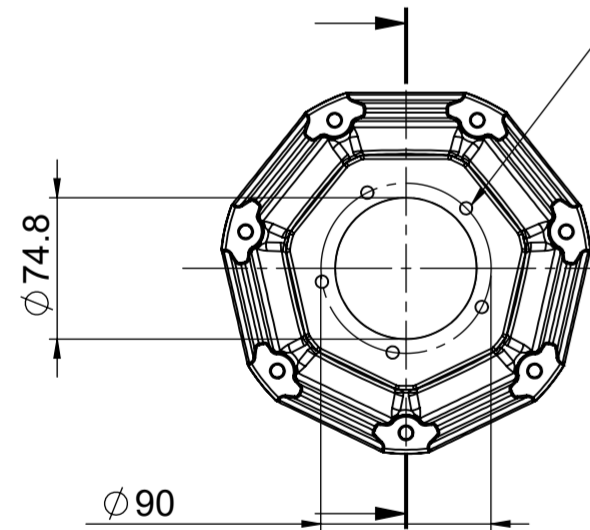
Trailing Tip 39.4 ±8  
Direction of Air-flow



Leading Base 42 ±4

Trailing Base 72 ±4

5 x Ø6.6



### Mounting Dimensions

Not indicated machine bore and keyway tolerance\*

All bore tolerance up to and including Ø48. H7 - DS/EN 20286-2  
All bore tolerance over Ø48 and up to Ø80. G7 - DS/EN 20286-2  
Tolerance on taper diameter (Large end) +0.05/-0.05  
Tolerance on the internal recess. +0.3/-0.0

Millimeter keyway standard. Inch keyway standard.  
Taper keyway standard for width according to. Taper keyway standard for depth according to.

Js9 according to BS 4235-1 (Table 1 & 3) BS46 -1 (table 2)  
Js9 according to BS 4235-1 (Table 1 & 3) DIN 6888

\*Not indicated tolerances and balancing grade are applied unless otherwise specified in the customer request field

#### Not indicated machine surface texture\*

General limits and fits according to DS/EN 20286-2  
Ra 1.6  
MWI limits and fits within 0.2 mm  
Ra 1.6  
Keyway surfaces:  
Ra 2.5  
Other surfaces:  
Ra 3.2  
Bolthole surfaces:  
Ra 6.3

#### Boss and hub aluminium material:

EN AC-44100 Gravity die casting  
EN AC-43000 Gravity die casting  
EN AC-47100 High pressure die casting  
EN AW-2011 Bar material  
GB 6061-T6 Bar material (MW Suzhou)

#### Not indicated basic machine geometrical product specification\*

**Hub Plates:**  
Datum: Centerhole diameter  
Boltholes: Position Ø0.3 to datum  
**Bosses:**  
Datum: Mounting recess diameter  
Boltholes: Position Ø0.2 to datum  
Centerhole diameter: Coaxial Ø0.2 to datum  
Exterior boss diameter: Coaxial Ø0.2 to datum  
Mounting flange diameter: Coaxial Ø0.2 to datum  
Mounting flange back surface: Total run-out 0.2 to datum  
Mounting flange front surface: Total run-out 0.2 to datum  
Boss front surface: Total run-out 0.2 to datum  
Boss back surface: Total run-out 0.2 to datum

Not indicated plastic mould tolerance\*  
DIN 16901-150

Not indicated aluminium mould tolerance\*  
DIN 1688 GTA 13/5

Not indicated balancing according to\*  
ISO 21940-11 G 6.3 @ 950Rpm

Drawing no.:  
126337

Multi-Wing International A/S

Staktoften 16  
DK-2950 Vedbaek  
Denmark  
Tlf: +45 45890133  
Fax: +45 45893133  
e-mail: info@multi-wing.com  
www.multi-wing.com

Not indicated machine taper angle tolerance\*  
±0.025°

Not indicated machine tolerance\*  
±0.2 - 0.5°

Not indicated edges\*  
No sharp edges

#### Customer request field

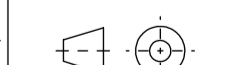
Impeller code:  
685/7-7/35/PAG/GREY/2ZL/74.8/5x6.6/BC90/B

Pitch angle can be measured on the blade at - Pitch ref -  
(if pitch ref is not present and for 2W/3W please contact local MW office)

Date: 12/11/20 Scale: 1:4 Sheet Size: A3

Signature: Iva Klusonova

#### Projection method:



Impeller weight guide:

3.35 kg

